



Albemarle Estate

AT TRUMP WINERY

Luxury You've Been Searching For

*We are located in
Charlottesville, Virginia*

DIRECT FLIGHTS TO CHO

ORD
1 hour 50 min

CLT
1 hour

LGA
1.5 hours

PHL
1.5 hours

ATL
1.5 hours

DRIVING TIMES FROM NEARBY CITIES

Washington, D.C.
2 hours

New York City
6 hours

Charlotte
4.5 hours

Virginia Beach
3 hours

Philadelphia
5 hours

Columbus
7 hours

ON-SITE HELIPAD

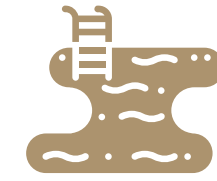


Getting Here



What to Expect

food & wine | sports | events | experiences | history



Estate Pool



Complimentary bikes



Running trails



Movie theatre



Massages (book in advance)



Fitness center



Sauna & Hot tub



Billiards



Bocce & Croquet



Fishing ponds



Hiking trails

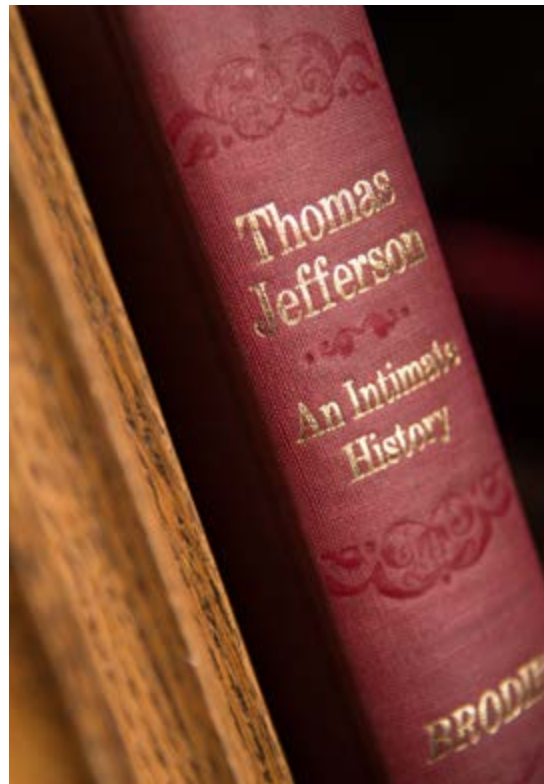


Wine & Beer tasting

On-Site Fun for All

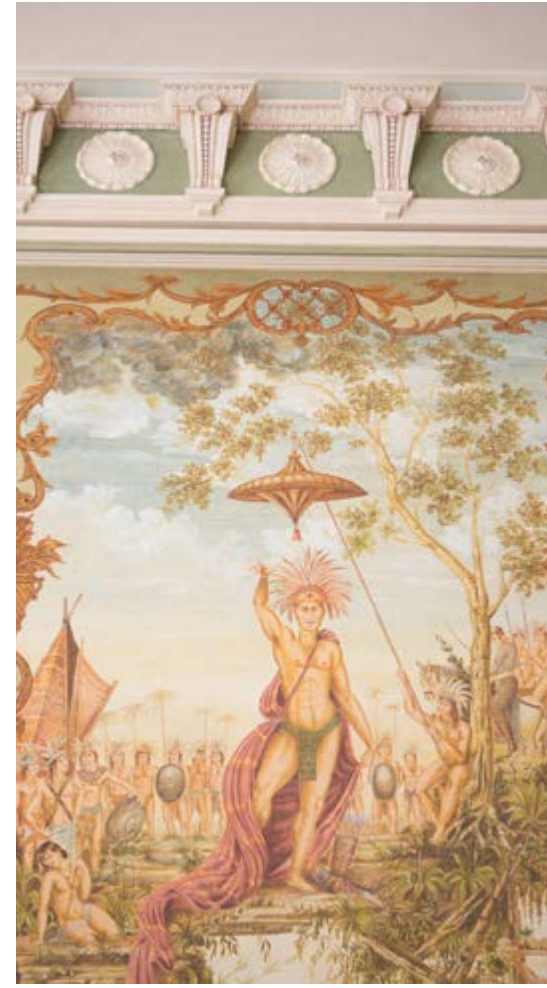
More than just a room
We offer you an entire Estate





Library

wood elements crafted by English artisan carpenters from a 150+ year old english oak | books | billiards | large screen tv | bar service | garden & countryside views



Dining Room

1760 hand-made Waterford crystal chandelier | hand-painted wallpaper designed in Paris and painted in India | English rococo mantel | crown molding | garden view



Living Room

1760 hand-made Waterford crystal chandelier | 18th-century antique marble mantel | 1950 Steinway & Sons Louis XV grand piano | Corinthian columns & Palladian windows | garden views



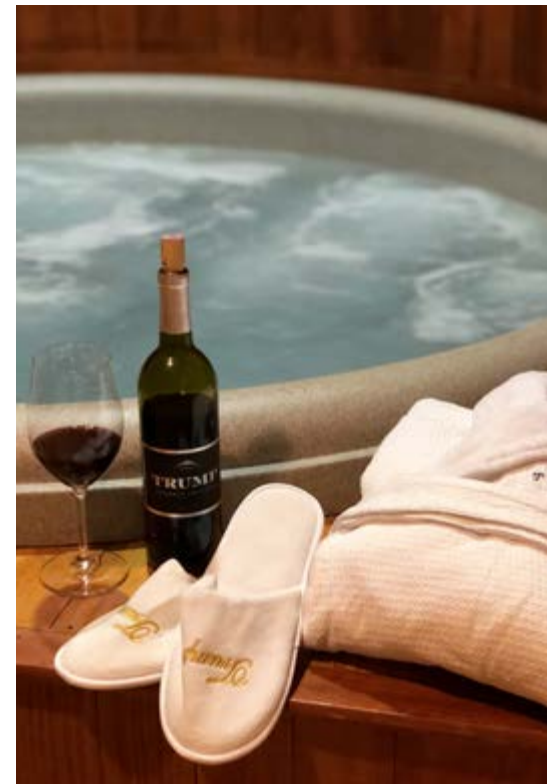
Gallery, Card Room, & South Parlor

380 ft gallery of six leaded glass arches, pink stone floors, & antique rose chandeliers | circular card room | south parlor features hand-carved, wooden paneling



Movie Theatre

once used for screening first release films in the '80s | state-of-the-art surround sound & HD projection | unlimited candy & popcorn bar | available for private booking



Fitness, Dry Sauna, Hot Tub, & Pool

fitness center features the latest TechnoGym equipment + towels & water provided | 50 ft long, heated pool ranges from 4 to 10 ft deep + outdoor bar & living room | indoor & outdoor hot tub

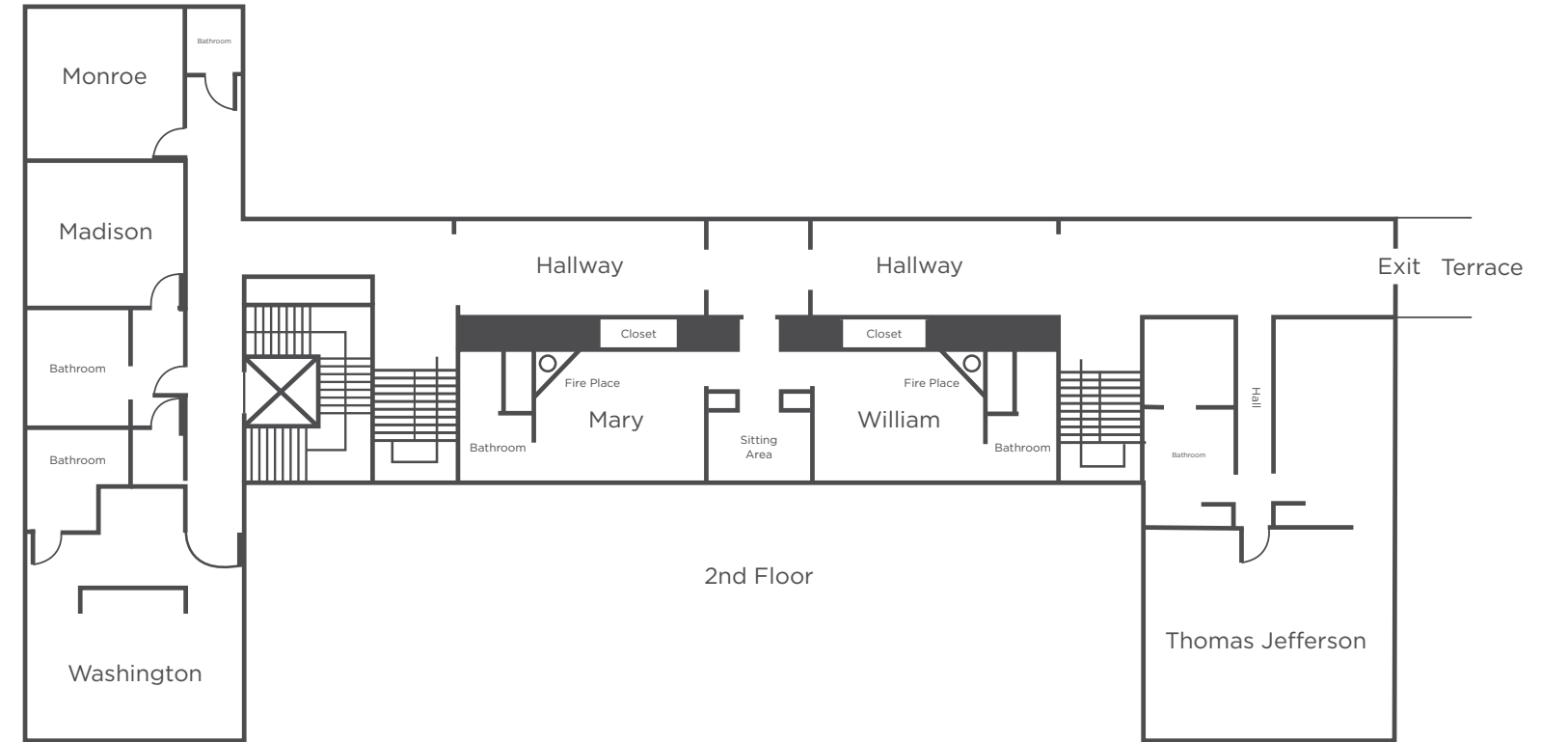


Gardens & Fountains

English gardens & formal garden terraces | reflection basin & koi pond | hanging garden | rose garden | fountains | knot garden | various fruit trees

Guest Rooms
Uniquely Elegant





Estate Guest Rooms



Deluxe Junior Suite: Washington

554 sq ft | 2 king beds | desk | 3-piece bathroom | countryside views | near elevator



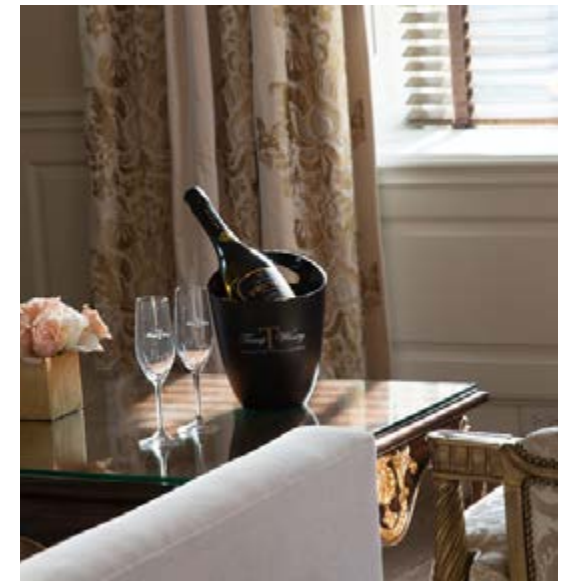
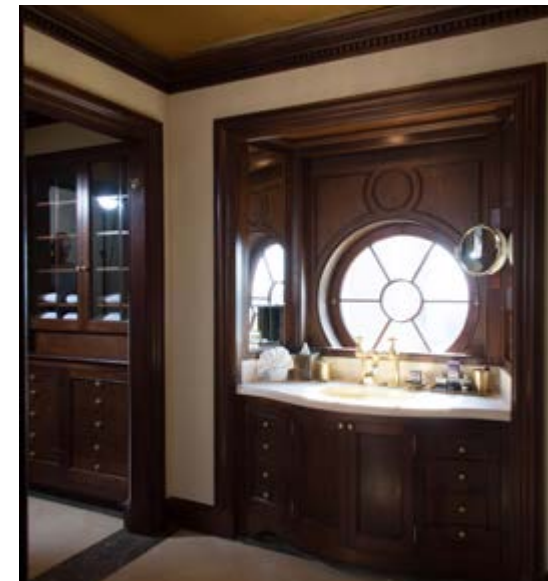
Deluxe Estate King: Madison & Monroe

350 - 400 sq ft | 1 king bed | 3-piece bathroom | courtyard & garden views | near elevator



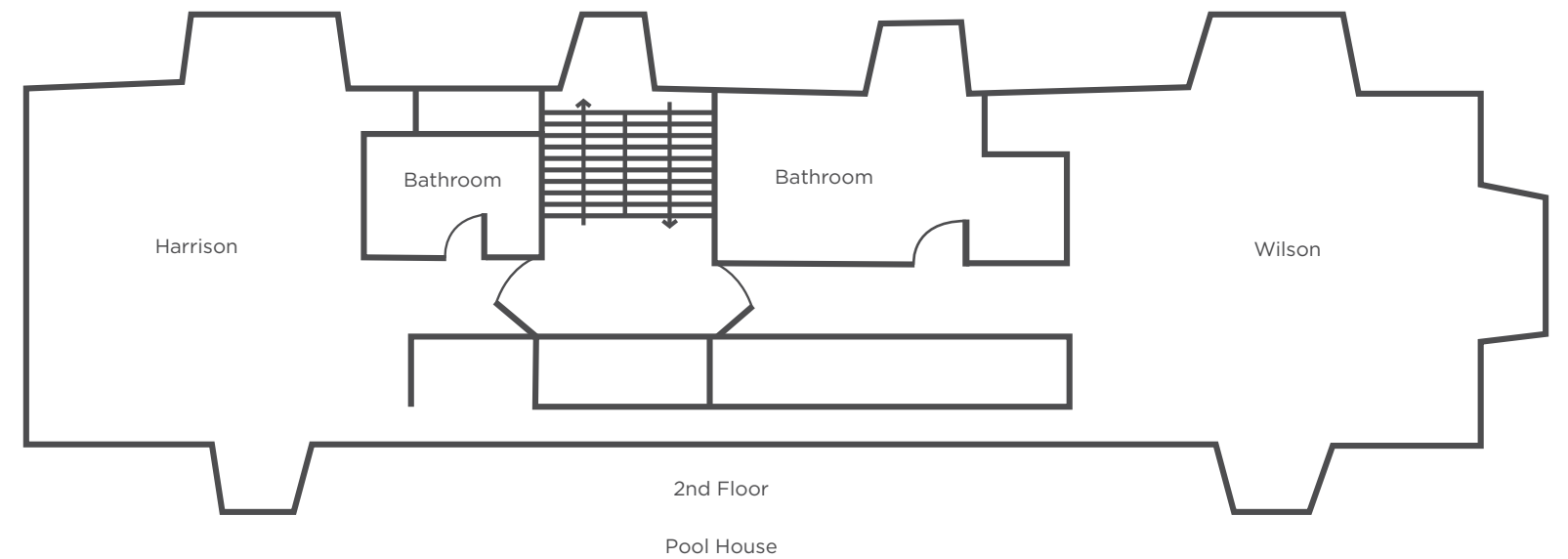
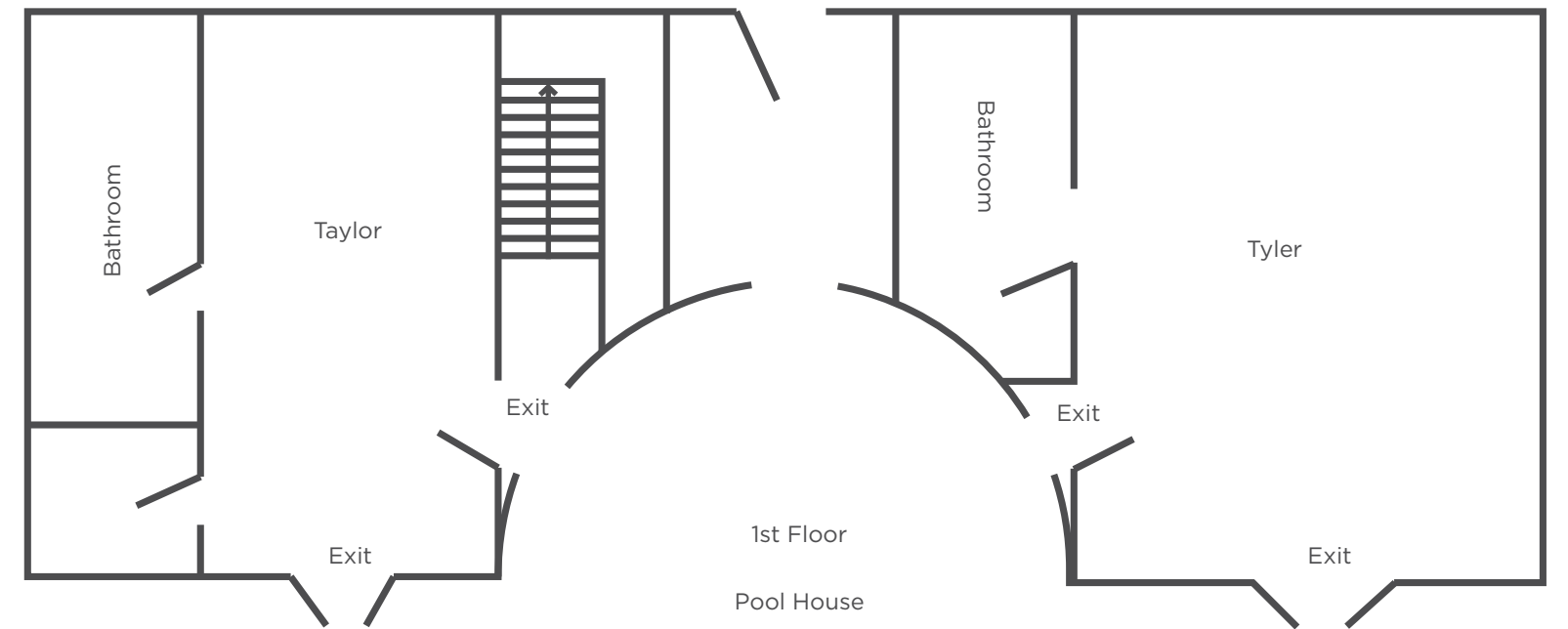
Deluxe Estate King: William & Mary

400 sq ft | 1 king bed | 4-piece bathroom with clawfoot tub & steam shower | gas fireplace | vineyard views



Grand Deluxe Suite: Jefferson

750 sq ft | 1 king bed | seating area | 12 ft ceiling | 2 fireplaces | 2 master baths with soaking tub & steam shower | vineyard & rose garden views



Pool House Guest Rooms



Deluxe Pool House King

350 - 450 sq ft | 1 king bed | marble bathroom | 30 yds from main estate | convenient access to pool & hot tub | countryside & pool views

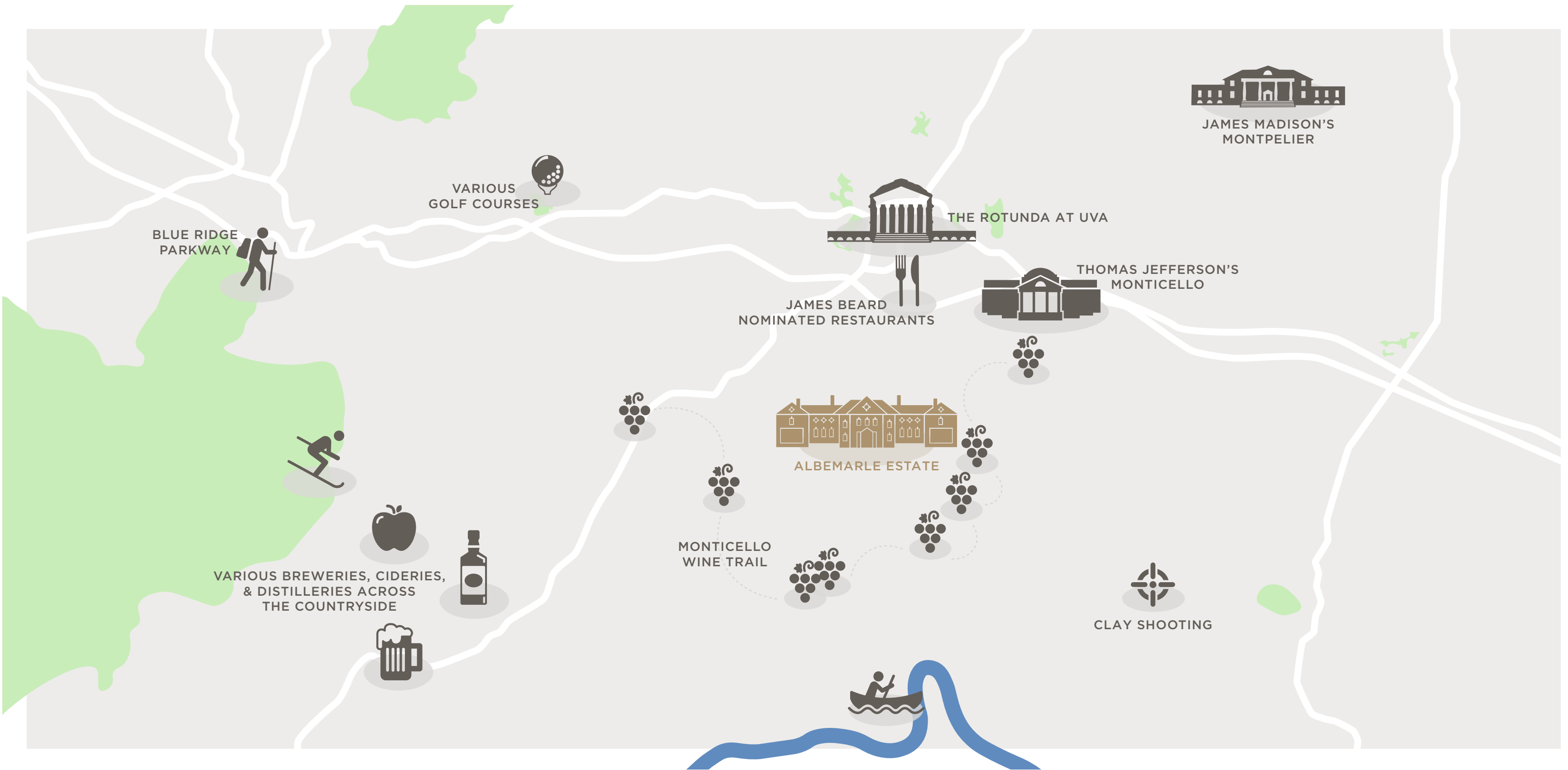


Private Cabin

700 sq ft | 2 king beds | large seating area | vaulted ceiling | 4-piece bathroom | wood burning fireplace | private back porch | 100 yds from main estate | pond & woodland views

Local Activities & Attractions





Surrounding Attractions

1 *Pippin Hill Farm and Winery*

2 *Wisdom Oak Winery*

3 *Thatch Winery*

4 *Michael Shaps Wineworks*

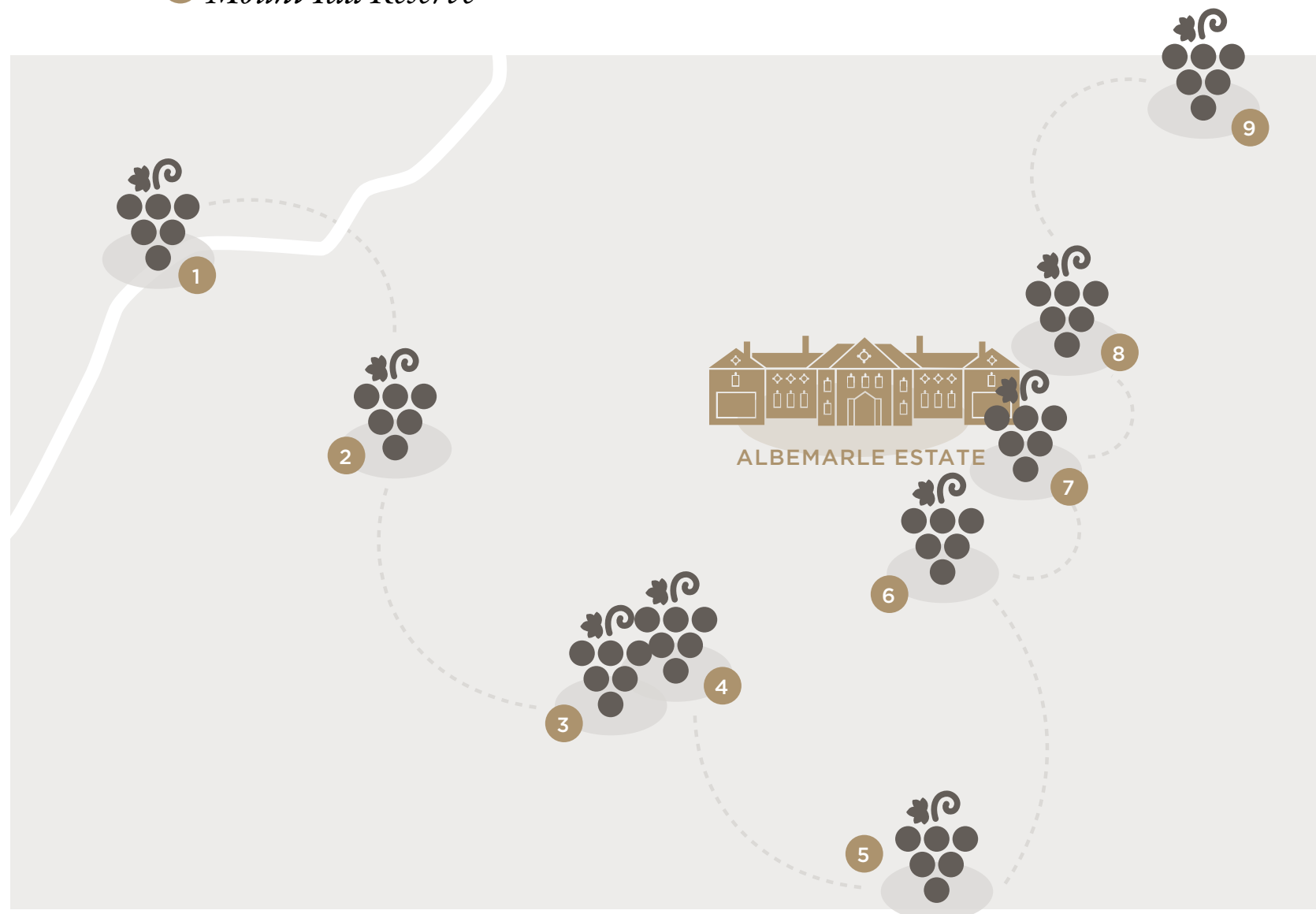
5 *Mount Ida Reserve*

6 *Blenheim Vineyards*

7 *Trump Winery*

8 *Gabriele Rause Winery*

9 *Jefferson Vineyards*



“Top 10 Best Wine Travel Destinations” in the world

- Wine Enthusiast

MONTICELLO WINE TRAIL

Virginia’s first and most premier wine region with over 35 wineries in a 25 mile radius of Charlottesville. With nearby Trump Winery and eight other world-class wineries within a ten mile radius, there is no better place to experience the quintessential Monticello Wine Trail experience.

[LEARN MORE](#)

TRUMP WINERY

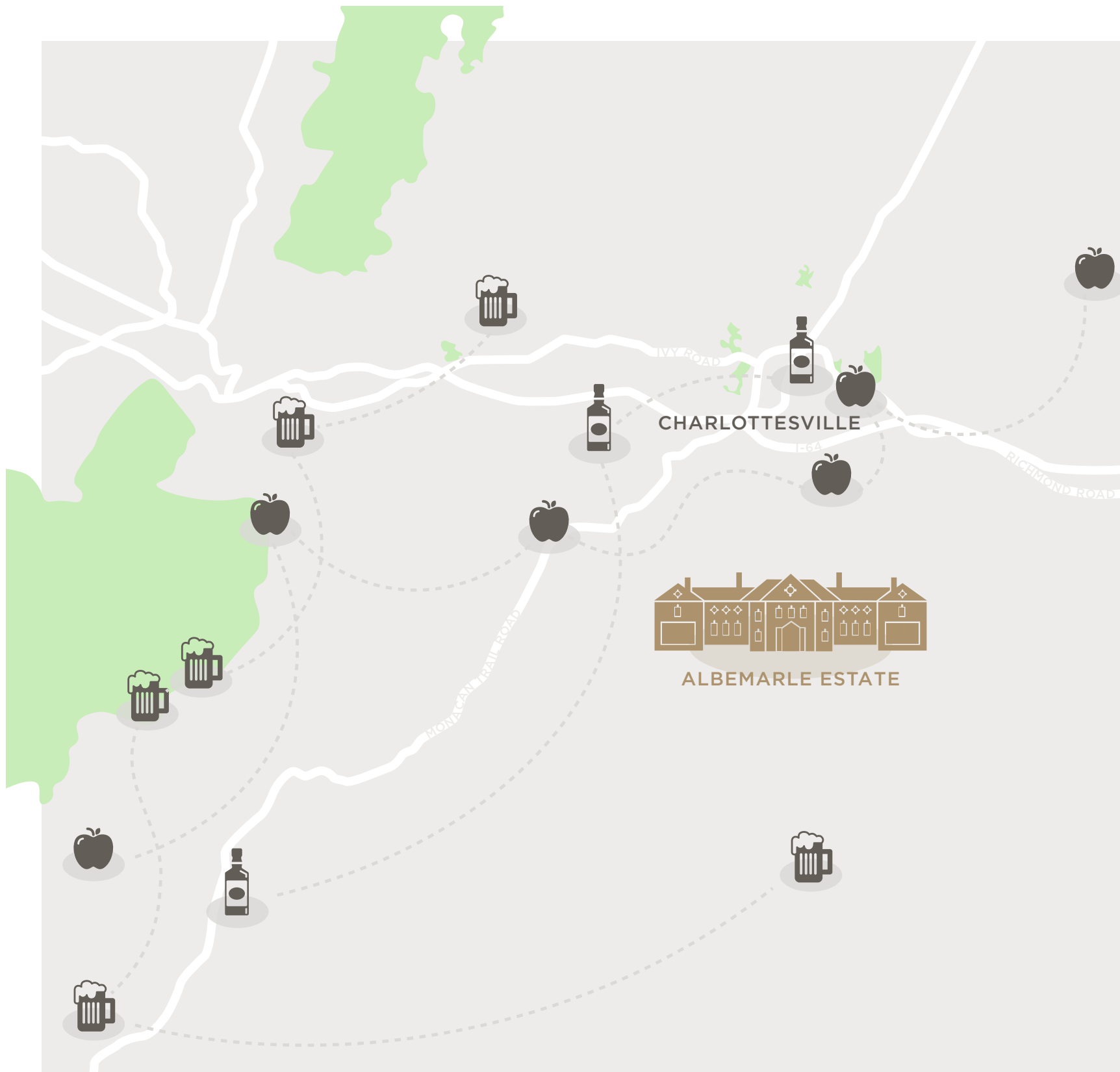
Rated America’s Best Blanc de Blanc, winner of numerous national and international gold medals, best-in-class designations, 90 points from Wine Spectator, 91 points from Wine Enthusiast and James Suckling, and 94 points from Steve Spurrier.

[LEARN MORE](#)

*“I have lived temperately....I double the doctor’s recommendation of a glass
and a half wine each day and even treble it with a friend.”*

- Thomas Jefferson

Wineries



BREWERIES

Experience the Brew Ridge Trail

The Brew Ridge Trail is a self-guided tour featuring five of the nation's best craft breweries. With everything from lagers to stouts and the gorgeous sights and sounds of the surrounding Blue Ridge Mountains - there's truly something for everyone.

[LEARN MORE](#)

CIDERIES

Cider was a colonial beverage enjoyed not only by forefathers such as Thomas Jefferson, John Adams and George Washington, but also by the common farmer, lawyer, butcher and soldier. The tradition continues today, with Virginia as currently the sixth-largest apple producing state by acreage in the United States. Visit one of the ten plus cideries in the area.

[LEARN MORE](#)

DISTILLERIES

The Birthplace of American Distilled Spirits

Visit Virginia's distilleries, meet the spirits' caretakers, the craftsmen and women who are eager to welcome you with warm hospitality, while sharing anecdotes behind every barrel of Virginia whiskey, behind each bottle of Virginia gin, behind every glass of Virginia brandy and more. Visit three of Virginia's distilleries in the Charlottesville area: Vitae Spirits, Ragged Branch Distillery, and Virginia Distillery Company.

[LEARN MORE](#)

Breweries, Cideries, & Distilleries

“Best town for food lovers”

- Wine Magazine

JAMES BEARD NOMINEES

1 *The Shack*
Staunton, JB Finalist

2 *Ivy Inn, Charlottesville*
Charlottesville, JB Finalist

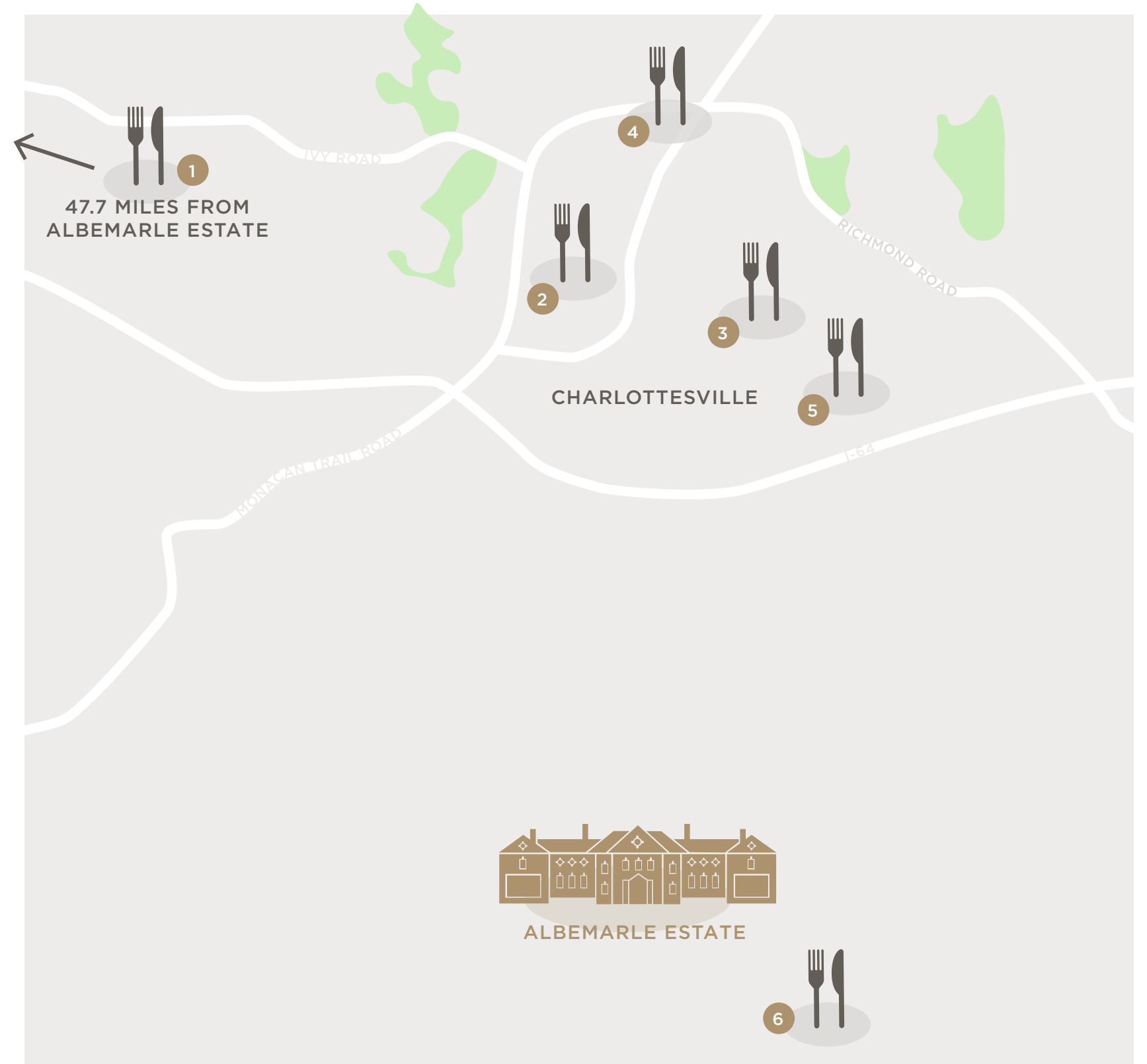
3 *The Alley Light*
Charlottesville

4 *Peter Chang's China Grill*
Charlottesville

5 *Junction*
Charlottesville

6 TRUMP WINERY TASTING ROOM

Seasonal cuisine that pairs perfectly with our wines.
Named one of the best BLTs in Charlottesville.

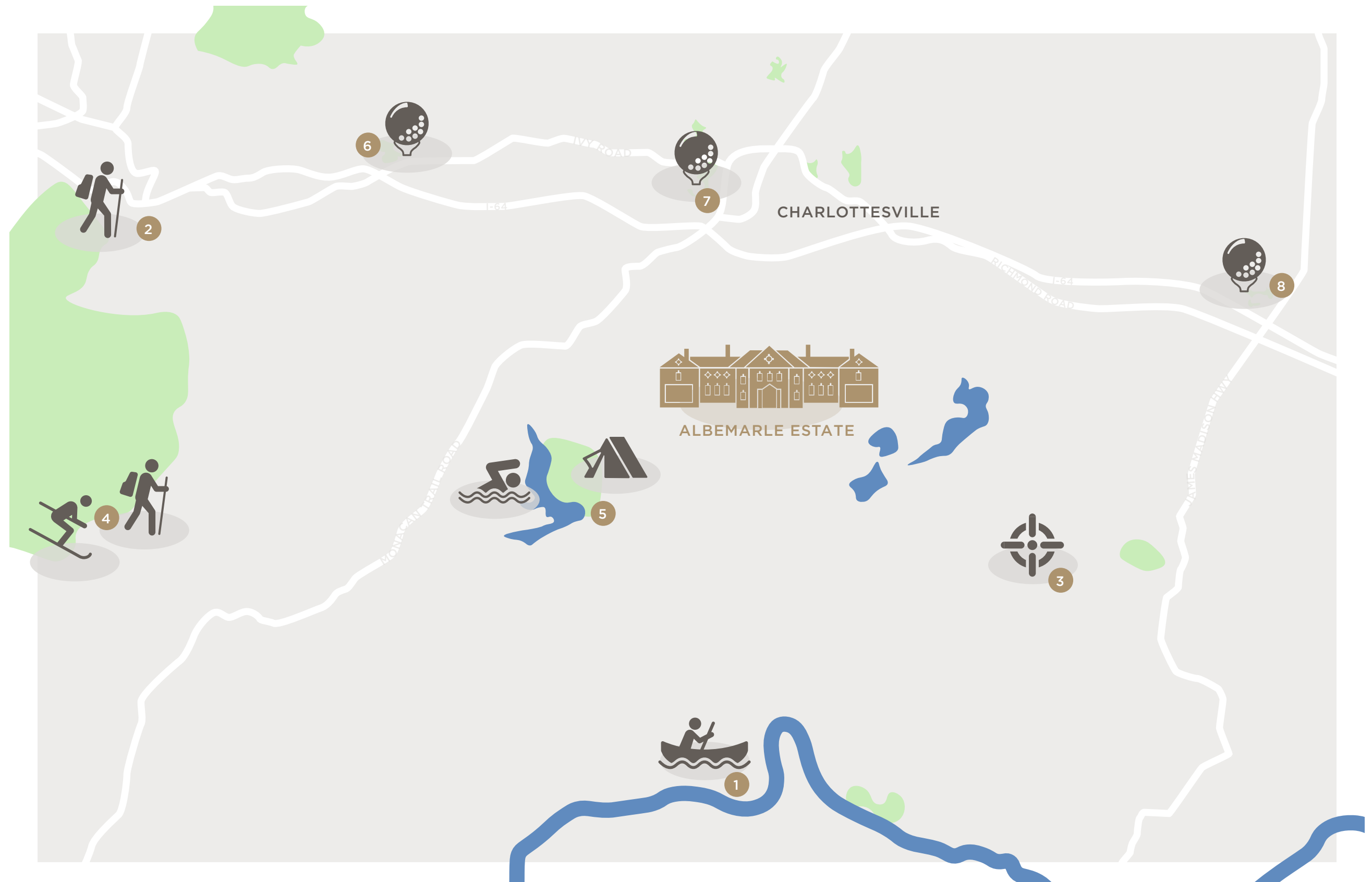


Outdoors

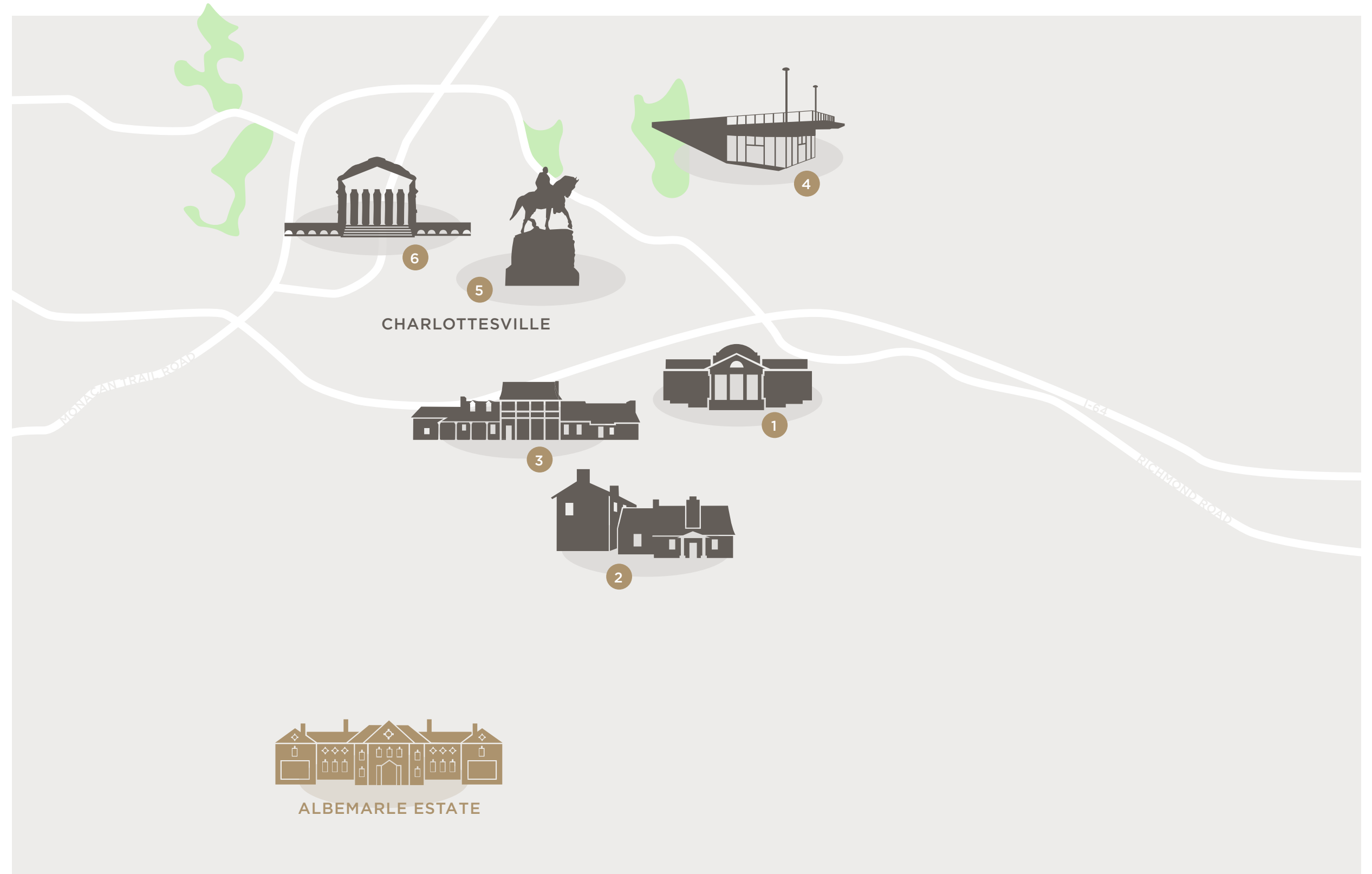
- 1 *James River*
rafting & kayaking | 35 minute drive
- 2 *Blue Ridge Parkway*
hiking & rock climbing | 45 minute drive
- 3 *Central Virginia Sporting Clays*
clay shooting | 35 minute drive
- 4 *Wintergreen*
downhill skiing, hiking, mountain biking
50 minute drive
- 5 *Walnut Creek Park*
swimming, camping, disc golf
25 minute drive

Golf

- 6 *Old Trail*
35 minute drive
- 7 *Birdwood*
25 minute drive
- 8 *Spring Creek*
35 minute drive



- 1 *Monticello*
10 minute drive
- 2 *Highland*
8 minute drive
- Montpelier*
50 minute drive
- 3 *Michie Tavern*
12 minute drive
- 4 *Lewis and Clark
Exploratory Center*
25 minute drive
- 5 *Walking Tours of
Historic Charlottesville
(Spring – Fall)*
20 minute drive
- 6 *UVA Rotunda*
20 minute drive



Entertainment

- 1 *John Paul Jones Arena*
- 2 *Sprint Pavilion*
- 3 *Jefferson Theater*
- 4 *Paramount Theater*
- 5 *Scott Stadium*

Museums

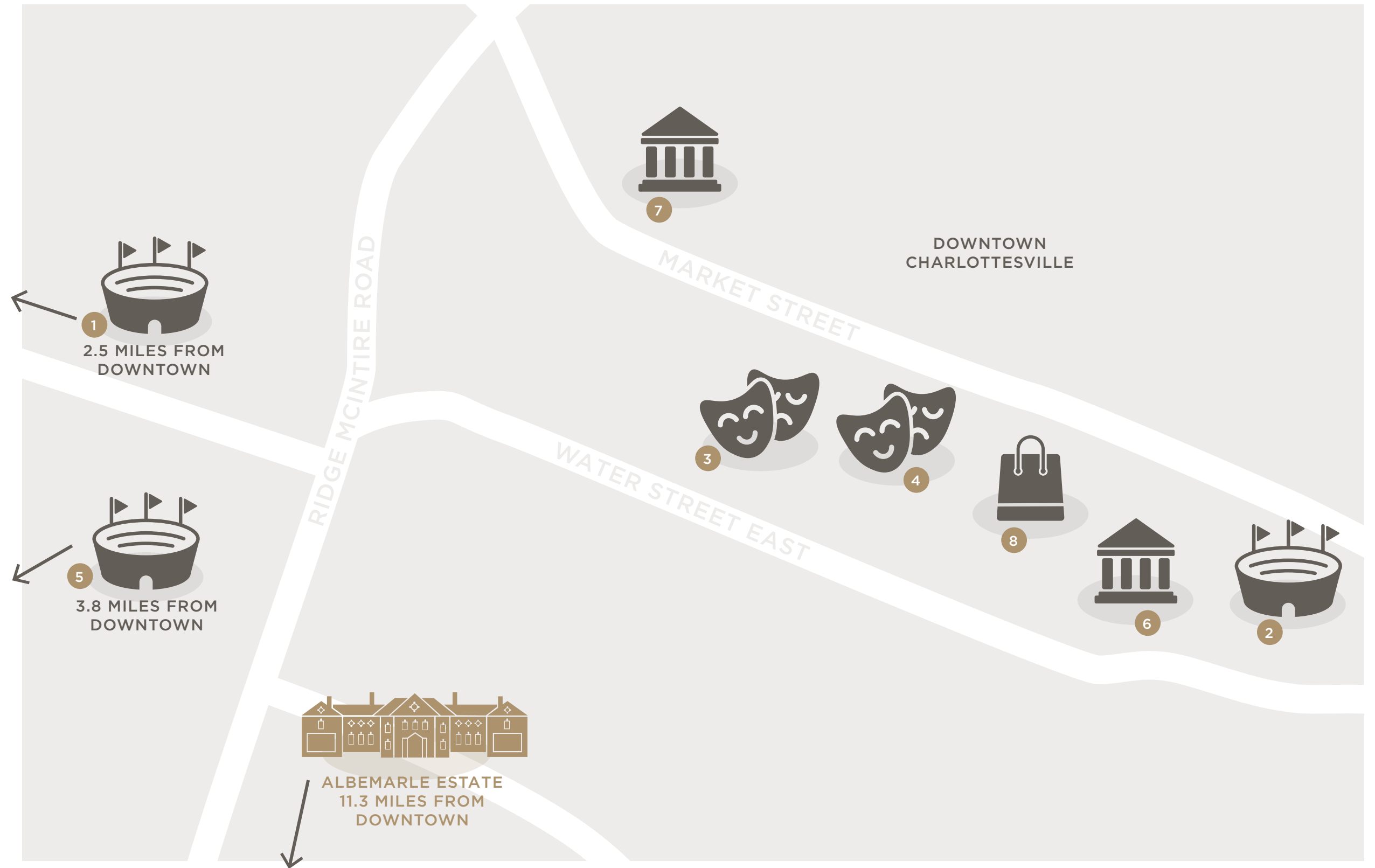
- 6 *Discovery Museum*
- 7 *McGuffey Art Center*

Festivals

- Virginia Film festival
- Virginia Festival of the book
- Taste of Monticello wine festival
- TomTom Festival
- Beer festivals & more

Shopping

- 8 *Historic Downtown Mall*
Galleries, shops, restaurants



Arts, Entertainment, & Shopping